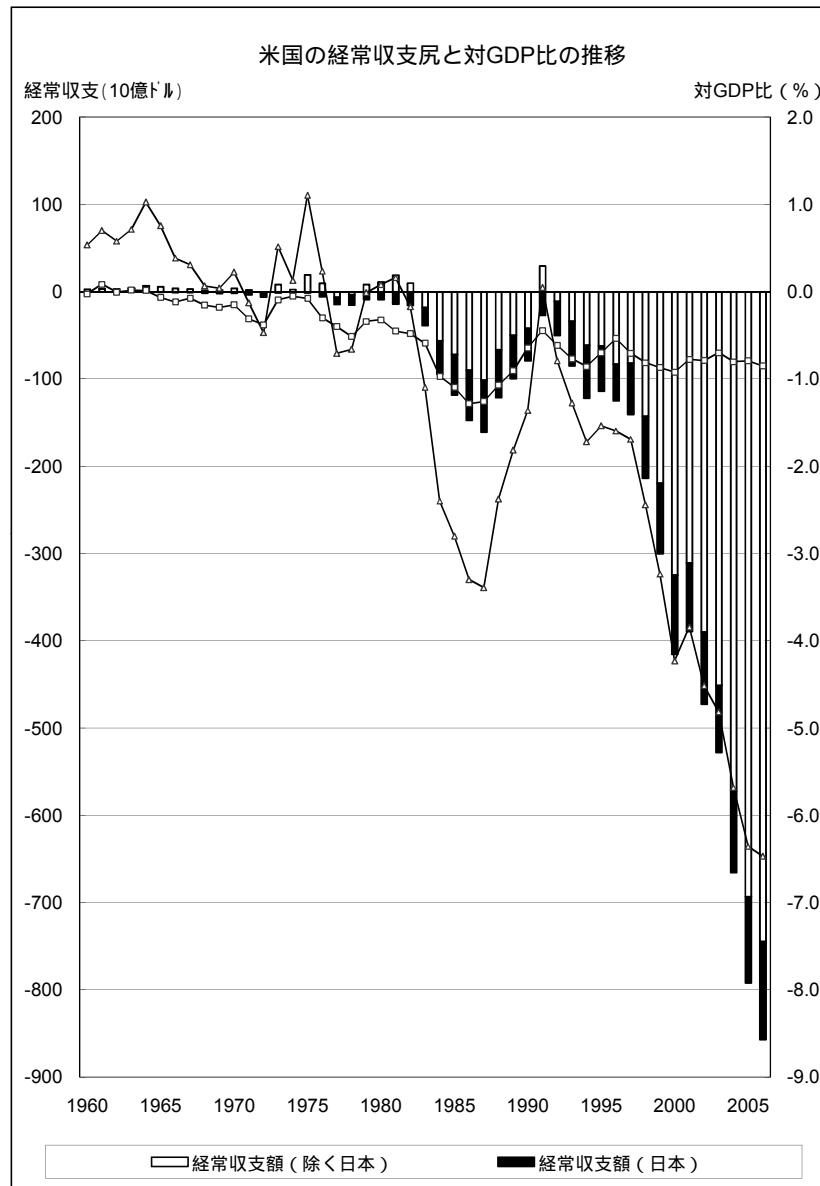


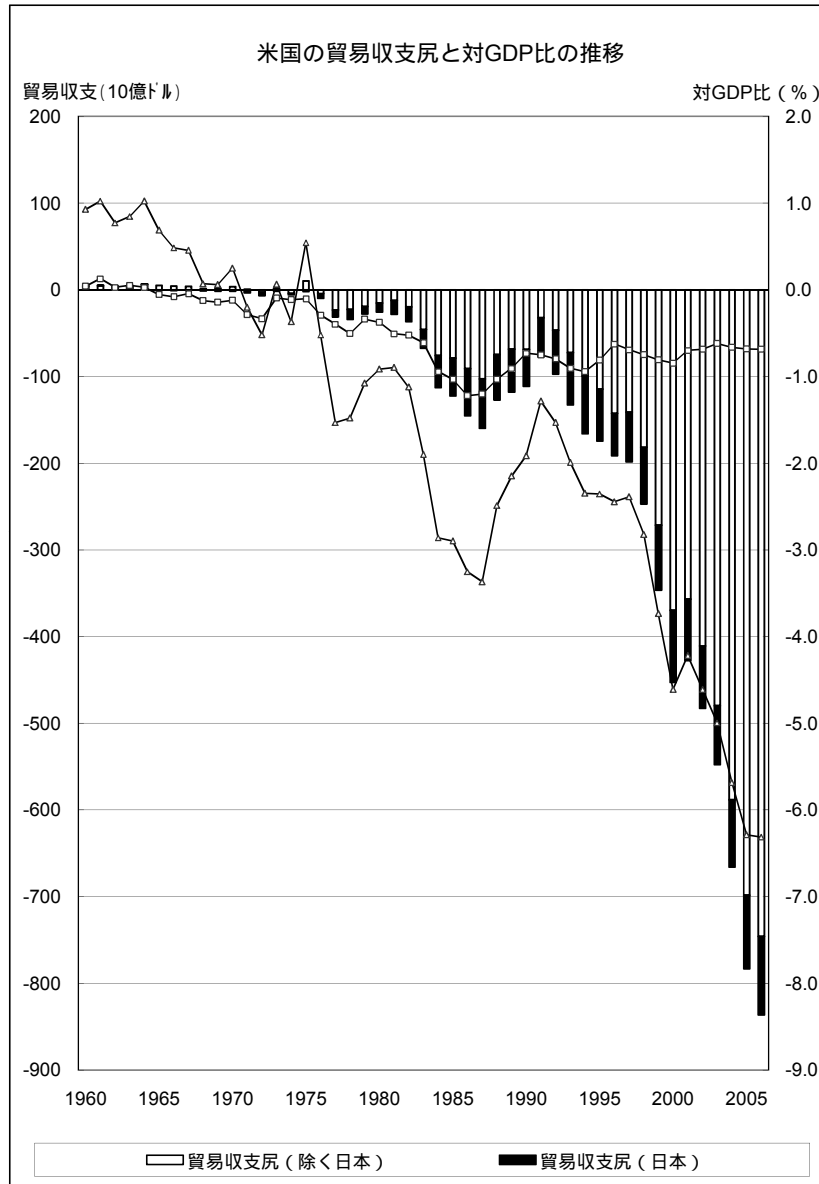
-010-1 米国の双子の赤字～経常収支の推移



年	経常収支		対世界				対日本	
	経常収支額 (10億ドル)	対GDP比 (%)	貿易収支(国際収支ベース)		経常収支		経常収支額 (10億ドル)	対GDP比 (%)
			収支戻 (10億ドル)	対GDP比 (%)	輸出額 (10億ドル)	輸入額 (10億ドル)		
1960	2.82	0.54	4.89	0.93	19.65	▲14.76	▲0.12	▲0.02
1965	5.43	0.76	4.95	0.69	26.46	▲21.51	▲0.47	▲0.07
1970	2.33	0.22	2.60	0.25	42.47	▲39.87	▲1.56	▲0.15
1971	▲1.43	▲0.13	▲2.26	▲0.20	43.32	▲45.58	▲3.50	▲0.31
1972	▲5.80	▲0.47	▲6.42	▲0.52	49.38	▲55.80	▲4.69	▲0.38
1973	7.14	0.52	0.91	0.07	71.41	▲70.50	▲1.29	▲0.09
1974	1.96	0.13	▲5.51	▲0.37	98.31	▲103.81	▲0.76	▲0.05
1975	18.12	1.11	8.90	0.54	107.09	▲98.19	▲1.24	▲0.08
1976	4.30	0.24	▲9.48	▲0.52	114.75	▲124.23	▲5.44	▲0.30
1977	▲14.34	▲0.71	▲31.09	▲1.53	120.82	▲151.91	▲8.08	▲0.40
1978	▲15.14	▲0.66	▲33.93	▲1.48	142.08	▲176.00	▲11.75	▲0.51
1979	▲0.29	▲0.01	▲27.57	▲1.08	184.44	▲212.01	▲8.67	▲0.34
1980	2.32	0.08	▲25.50	▲0.91	224.25	▲249.75	▲8.91	▲0.32
1981	5.03	0.16	▲28.02	▲0.90	237.04	▲265.07	▲14.08	▲0.45
1982	▲5.54	▲0.17	▲36.49	▲1.12	211.16	▲247.64	▲15.58	▲0.48
1983	▲38.69	▲1.09	▲67.10	▲1.90	201.80	▲268.90	▲20.84	▲0.59
1984	▲94.34	▲2.40	▲112.49	▲2.86	219.93	▲332.42	▲38.12	▲0.97
1985	▲118.16	▲2.80	▲122.17	▲2.89	215.92	▲338.09	▲46.25	▲1.10
1986	▲147.18	▲3.30	▲145.08	▲3.25	223.34	▲368.43	▲57.22	▲1.28
1987	▲160.66	▲3.39	▲159.56	▲3.37	250.21	▲409.77	▲59.59	▲1.26
1988	▲121.15	▲2.37	▲126.96	▲2.49	320.23	▲447.19	▲54.60	▲1.07
1989	▲99.49	▲1.81	▲117.75	▲2.15	359.92	▲477.67	▲49.62	▲0.90
1990	▲78.97	▲1.36	▲111.04	▲1.91	387.40	▲498.44	▲37.30	▲0.64
1991	2.90	0.05	▲76.94	▲1.28	414.08	▲491.02	▲26.68	▲0.44
1992	▲50.08	▲0.79	▲96.90	▲1.53	439.63	▲536.53	▲38.91	▲0.61
1993	▲84.81	▲1.27	▲132.45	▲1.99	456.94	▲589.39	▲51.13	▲0.77
1994	▲121.61	▲1.72	▲165.83	▲2.34	502.86	▲668.69	▲60.47	▲0.86
1995	▲113.57	▲1.54	▲174.17	▲2.35	575.20	▲749.37	▲51.68	▲0.70
1996	▲124.76	▲1.60	▲191.00	▲2.44	612.11	▲803.11	▲41.76	▲0.53
1997	▲140.40	▲1.69	▲198.10	▲2.39	678.37	▲876.47	▲58.58	▲0.71
1998	▲213.53	▲2.44	▲246.69	▲2.82	670.42	▲917.10	▲70.93	▲0.81
1999	▲299.83	▲3.23	▲346.02	▲3.73	683.97	▲1,029.98	▲80.40	▲0.87
2000	▲415.15	▲4.23	▲452.41	▲4.61	771.99	▲1,224.41	▲90.49	▲0.92
2001	▲388.96	▲3.84	▲427.19	▲4.22	718.71	▲1,145.90	▲78.49	▲0.78
2002	▲472.45	▲4.51	▲482.30	▲4.61	682.42	▲1,164.72	▲82.53	▲0.79
2003	▲527.51	▲4.81	▲547.30	▲4.99	713.42	▲1,260.72	▲76.43	▲0.70
2004	▲665.29	▲5.68	▲665.41	▲5.68	807.52	▲1,472.93	▲93.68	▲0.80
2005	▲791.51	▲6.35	▲782.74	▲6.28	894.63	▲1,677.37	▲98.67	▲0.79
2006/p/	▲856.66	▲6.47	▲835.97	▲6.31	1,023.69	▲1,859.66	▲112.45	▲0.85
1961-1970(平均)	3.28	0.48	3.85	0.57	28.76	▲24.91	▲0.61	▲0.06
1971-1980(平均)	▲0.32	0.01	▲13.19	▲0.60	115.58	▲128.78	▲5.43	▲0.28
1981-1990(平均)	▲85.91	▲1.85	▲102.67	▲2.28	262.69	▲365.36	▲39.32	▲0.87
1991-2000(平均)	▲156.08	▲1.85	▲208.05	▲2.55	580.56	▲788.61	▲57.10	▲0.72
2001-2006(平均)	▲617.06	▲5.28	▲623.48	▲5.35	806.73	▲1,430.21	▲90.38	▲0.78

(注)平均は各年の値の平均を示す。  
(出所)米国商務省経済分析局のデータをもとにITIで作成

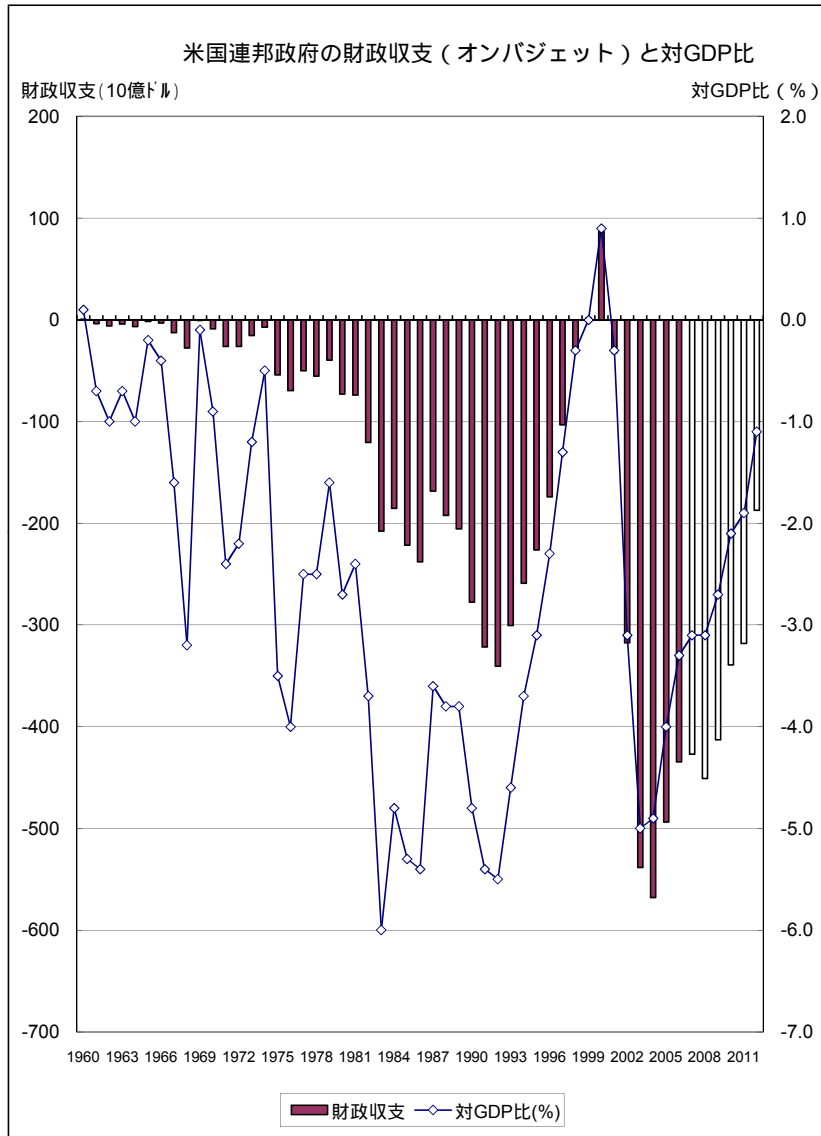
-010-2 米国の双子の赤字～経常収支の推移



年	貿易収支(国際収支ベース)							
	対日本		対中国		対EU		対ドイツ	
	収支戻 (10億ドル)	対GDP比 (%)	収支戻 (10億ドル)	対GDP比 (%)	収支戻 (10億ドル)	対GDP比 (%)	収支戻 (10億ドル)	対GDP比 (%)
1960	0.23	0.04	(na)	(na)	(na)	(na)	(na)	(na)
1965	▲0.39	▲0.05	(na)	(na)	(na)	(na)	(na)	(na)
1970	▲1.24	▲0.12	(na)	(na)	(na)	(na)	(na)	(na)
1971	▲3.23	▲0.29	(na)	(na)	(na)	(na)	(na)	(na)
1972	▲4.11	▲0.33	(na)	(na)	(na)	(na)	(na)	(na)
1973	▲1.31	▲0.09	(na)	(na)	(na)	(na)	(na)	(na)
1974	▲1.69	▲0.11	(na)	(na)	(na)	(na)	(na)	(na)
1975	▲1.69	▲0.10	(na)	(na)	(na)	(na)	(na)	(na)
1976	▲5.34	▲0.29	(na)	(na)	(na)	(na)	(na)	(na)
1977	▲8.00	▲0.39	(na)	(na)	(na)	(na)	(na)	(na)
1978	▲11.57	▲0.50	0.49	0.02	2.83	0.12	▲2.79	▲0.12
1979	▲8.63	▲0.34	1.14	0.04	8.57	0.33	▲2.20	▲0.09
1980	▲10.47	▲0.38	2.76	0.10	16.47	0.59	▲0.38	▲0.01
1981	▲15.80	▲0.51	1.74	0.06	9.97	0.32	▲0.95	▲0.03
1982	▲16.99	▲0.52	0.64	0.02	4.56	0.14	▲2.67	▲0.08
1983	▲21.56	▲0.61	▲0.05	▲0.00	1.98	0.06	▲4.46	▲0.13
1984	▲36.98	▲0.94	▲0.10	▲0.00	▲7.84	▲0.20	▲8.65	▲0.22
1985	▲43.51	▲1.03	0.03	0.00	▲14.18	▲0.34	▲10.57	▲0.25
1986	▲54.40	▲1.22	▲1.62	▲0.04	▲22.32	▲0.50	▲14.07	▲0.32
1987	▲56.95	▲1.20	▲2.79	▲0.06	▲21.95	▲0.46	▲15.42	▲0.33
1988	▲52.62	▲1.03	▲3.44	▲0.07	▲11.57	▲0.23	▲12.06	▲0.24
1989	▲49.54	▲0.90	▲6.23	▲0.11	▲3.76	▲0.07	▲8.47	▲0.15
1990	▲42.38	▲0.73	▲10.42	▲0.18	1.95	0.03	▲9.89	▲0.17
1991	▲44.93	▲0.75	▲12.74	▲0.21	13.26	0.22	▲5.48	▲0.09
1992	▲50.45	▲0.80	▲18.34	▲0.29	3.91	0.06	▲8.23	▲0.13
1993	▲60.22	▲0.90	▲22.84	▲0.34	▲10.23	▲0.15	▲10.07	▲0.15
1994	▲66.71	▲0.94	▲29.57	▲0.42	▲15.44	▲0.22	▲12.94	▲0.18
1995	▲59.87	▲0.81	▲33.80	▲0.46	▲12.57	▲0.17	▲14.91	▲0.20
1996	▲48.71	▲0.62	▲39.58	▲0.51	▲21.41	▲0.27	▲15.98	▲0.20
1997	▲57.28	▲0.69	▲49.73	▲0.60	▲21.88	▲0.26	▲19.24	▲0.23
1998	▲65.37	▲0.75	▲56.97	▲0.65	▲29.91	▲0.34	▲23.58	▲0.27
1999	▲74.80	▲0.81	▲68.74	▲0.74	▲45.59	▲0.49	▲28.81	▲0.31
2000	▲83.02	▲0.85	▲83.88	▲0.85	▲57.42	▲0.58	▲29.58	▲0.30
2001	▲70.60	▲0.70	▲83.17	▲0.82	▲63.70	▲0.63	▲29.67	▲0.29
2002	▲71.76	▲0.69	▲103.15	▲0.99	▲84.92	▲0.81	▲36.44	▲0.35
2003	▲67.78	▲0.62	▲124.14	▲1.13	▲97.52	▲0.89	▲39.72	▲0.36
2004	▲77.52	▲0.66	▲162.04	▲1.38	▲110.47	▲0.94	▲46.29	▲0.40
2005	▲84.74	▲0.68	▲201.67	▲1.62	▲124.44	▲1.00	▲51.00	▲0.41
2006/p/	▲90.58	▲0.68	▲232.74	▲1.76	▲120.00	▲0.91	▲48.34	▲0.36
1961-1970(平均)	▲0.37	▲0.03	(na)	(na)	(na)	(na)	(na)	(na)
1971-1980(平均)	▲5.60	▲0.28	(na)	(na)	(na)	(na)	(na)	(na)
1981-1990(平均)	▲39.07	▲0.87	▲2.22	▲0.04	▲6.32	▲0.12	▲8.72	▲0.19
1991-2000(平均)	▲61.14	▲0.79	▲41.62	▲0.51	▲19.73	▲0.22	▲16.88	▲0.21
2001-2006(平均)	▲77.16	▲0.67	▲151.15	▲1.28	▲100.18	▲0.86	▲41.91	▲0.36

(注) 平均は各年の値の平均を示す。  
(出所) 米国商務省経済分析局のデータをもとにITIで作成

-010-3 米国の双子の赤字～経常収支の推移



(単位:100万米ドル)

年	オンバジェット				トータル	
	歳入	歳出	収支戻	対GDP比 (%)	収支戻	対GDP比 (%)
1960	81,851	81,341	510	0.1	301	0.1
1965	100,094	101,699	▲1,605	▲0.2	▲1,411	▲0.2
1970	159,348	168,042	▲8,694	▲0.9	▲2,842	▲0.3
1975	216,633	270,780	▲54,148	▲3.5	▲53,242	▲3.4
1980	403,903	477,044	▲73,141	▲2.7	▲73,830	▲2.7
1981	469,097	542,956	▲73,859	▲2.4	▲78,968	▲2.6
1982	474,299	594,892	▲120,593	▲3.7	▲127,977	▲4.0
1983	453,242	660,934	▲207,692	▲6.0	▲207,802	▲6.0
1984	500,411	685,680	▲185,269	▲4.8	▲185,367	▲4.8
1985	547,918	769,447	▲221,529	▲5.3	▲212,308	▲5.1
1986	568,986	806,901	▲237,915	▲5.4	▲221,227	▲5.0
1987	640,951	809,308	▲168,357	▲3.6	▲149,730	▲3.2
1988	667,812	860,077	▲192,265	▲3.8	▲155,178	▲3.1
1989	727,525	932,918	▲205,393	▲3.8	▲152,639	▲2.8
1990	750,439	1,028,065	▲277,626	▲4.8	▲221,036	▲3.9
1991	761,209	1,082,644	▲321,435	▲5.4	▲269,238	▲4.5
1992	788,902	1,129,310	▲340,408	▲5.5	▲290,321	▲4.7
1993	842,537	1,142,935	▲300,398	▲4.6	▲255,051	▲3.9
1994	923,695	1,182,535	▲258,840	▲3.7	▲203,186	▲2.9
1995	1,000,853	1,227,220	▲226,367	▲3.1	▲163,952	▲2.2
1996	1,085,685	1,259,704	▲174,019	▲2.3	▲107,431	▲1.4
1997	1,187,433	1,290,681	▲103,248	▲1.3	▲21,884	▲0.3
1998	1,306,156	1,336,081	▲29,925	▲0.3	69,270	0.8
1999	1,383,177	1,381,257	1,920	0.0	125,610	1.4
2000	1,544,873	1,458,451	86,422	0.9	236,241	2.4
2001	1,483,907	1,516,352	▲32,445	▲0.3	128,236	1.3
2002	1,338,074	1,655,491	▲317,417	▲3.1	▲157,758	▲1.5
2003	1,258,690	1,797,108	▲538,418	▲5.0	▲377,585	▲3.5
2004	1,345,534	1,913,495	▲567,961	▲4.9	▲412,727	▲3.6
2005	1,576,383	2,069,994	▲493,611	▲4.0	▲318,346	▲2.6
2006	1,798,872	2,233,366	▲434,494	▲3.3	▲248,181	▲1.9
2007(予測)	1,905,966	2,332,984	▲427,018	▲3.1	▲244,171	▲1.8
2008(予測)	1,988,389	2,439,334	▲450,945	▲3.1	▲239,387	▲1.6
2009(予測)	2,086,937	2,499,661	▲412,724	▲2.7	▲187,166	▲1.2
2010(予測)	2,201,442	2,540,528	▲339,086	▲2.1	▲94,361	▲0.6
2011(予測)	2,307,764	2,625,813	▲318,049	▲1.9	▲53,774	▲0.3
2012(予測)	2,472,007	2,659,134	▲187,127	▲1.1	61,018	0.3
1961-1970(平均)	113,991	121,431	▲7,440	▲1.0	▲5,967	▲0.8
1971-1980(平均)	252,314	293,940	▲41,626	▲2.3	▲42,182	▲2.3
1981-1990(平均)	580,068	769,118	▲189,050	▲4.4	▲171,223	▲4.1
1991-2000(平均)	1,082,452	1,249,082	▲166,630	▲2.5	▲87,994	▲1.5
2001-2006(平均)	1,466,910	1,864,301	▲397,391	▲3.4	▲231,060	▲2.0

(注)2007-2012年は予測値  
 オンバジェットは社会保障基金と郵便会計を除く  
 トータルは2つの会計(社会保障と郵便会計)を含む  
 (出所)ホワイトハウス行政予算管理局(OMB)予算教書資料2008をもとにITIで作成